

Terraced House for sale in Stazzema

€ 130.000

Ref. 83334



115 sq.m. | Bathrooms: 2 | Bedrooms: 2 | Rooms: 6

In Alta Versilia, in the municipality of Stazzema, immersed in the quiet and authentic charm of the Apuan Alps and a short distance from the renowned towns of Versilia, we offer for sale a characteristic TOWNHOUSE on several levels, ideal for those who want an independent solution in a typical and peaceful setting.

The property extends over multiple floors connected by an internal staircase, providing a clear and functional separation between utility areas, living areas, and sleeping quarters, making the spaces practical and well-organized for everyday life. On the ground floor, there is an entrance hall with a staircase leading to the upper levels, a convenient understairs storage space, a convenient laundry room with a bathroom with shower, and a cellar with a fireplace currently used as a second kitchen. The first floor features the living area, consisting of a welcoming and bright living room and an eat-in kitchen. The second floor houses the sleeping area, comprising two double bedrooms and a second bathroom with a bathtub serving the sleeping area.

The multi-level layout allows for a harmonious and functional experience, maintaining a natural division between the areas dedicated to everyday life and those intended for relaxation.

This property is ideal as both a primary residence and a holiday home, perfect for those wishing to spend their free time in a characteristic setting, away from the chaos of the city yet easily accessible to the main towns of Versilia.

Contact us as soon as possible for more information or to book a visit!

The address shown on the map may not be the exact one, but the property is still located in the immediate vicinity. This listing does not constitute any contractual element.

Certification

Energy Class: G

Features

Code: 83334

Reason: Sale

Categoria: Terraced House

Zip Code: 55040

Municipality: Stazzema

Total Square Meters: 115 sq.m.

Bedrooms: 2

Bathrooms: 2

Rooms: 6

Nearby

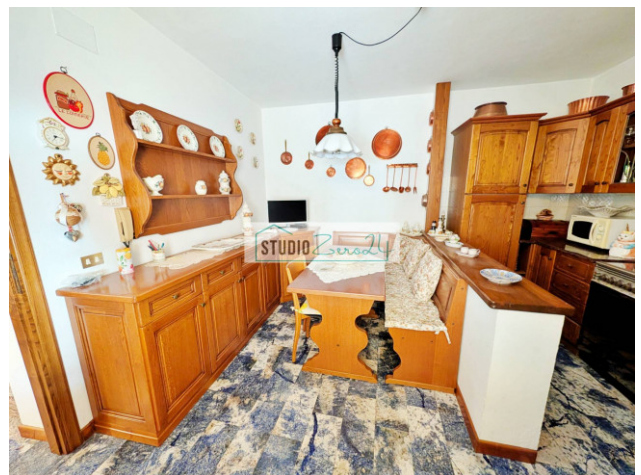
Football Fields

Fitness Centers

Playgrounds

Public Transport

Cafe







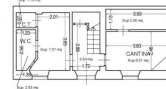
PLANIMETRIA STATO ATTUALE SCALA 1/100



PIANTA PIANO SECONDO



PIANTA PIANO PRIMO



PIANTA PIANO TERRA