

Homestead for sale in Pietrasanta

€ 930.000

Ref. 83300



320 sq.m. | Bathrooms: 3 | Bedrooms: 3 | Rooms: 9

In the peaceful countryside of Pietrasanta, just a few minutes' drive from the town center, we offer for sale this charming farmhouse consisting of two residential units and approximately 5,000 square meters of land. The first unit, facing the sea, comprises a living room with fireplace, a kitchenette, and a storage room on the ground floor. On the first floor, there is a double bedroom, a bathroom, and access to the attic. The second unit, facing the mountain, comprises a living room with fireplace, an eat-in kitchen, and a storage room on the ground floor. On the first floor, there are two double bedrooms, a bathroom with tub, and the other bathroom with access to the attic. In addition to the land, the property includes a perimeter terrace on the first floor, a small outbuilding historically used as a barn, and, adjacent to the main building, an outdoor storage room. Ideal for two families.

POSSIBILITY OF EXPANSION

This farmhouse is ideal for those who want to live surrounded by nature, have all the necessary space and be just minutes away from the main services.

Contact us as soon as possible for more information or to schedule a visit.

The address shown on the map may not be the exact one, but the property is still located in the immediate vicinity. This listing does not constitute any contractual agreement.

Certification

Energy Class: F

EPglnr: 192.40 kwh/□

Features

Code: 83300

Reason: Sale

Categoria: Homestead

Zip Code: 55045

Municipality: Pietrasanta

Total Square Meters: 320 sq.m.

Bedrooms: 3

Bathrooms: 3

Rooms: 9

Parking: Carport

Air-Conditioned

Nearby

Gyms

Spa

Football Fields

Fitness Centers

Tennis Courts

Bike Lanes

Playgrounds

Railway Station

Public Transport

Kindergarten

Elementary Schools

Schools

High Schools

Cafe

Post Offices

Shopping Centers

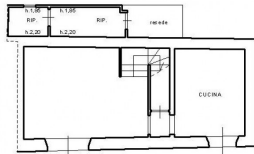
Municipal Offices



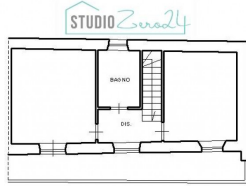




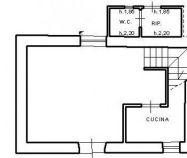




PIANO TERRA h.2,70



PIANO PRIMO h.2,82



PIANO TERRA h.2,70

